

STARCRAFT 

CRUISERS **75**

**Starcraftsmanship
guarantees
the good times.**



STARCRAFTS



There's nothing in the world like it. Fresh air. Sunshine. Water. And your new Starcraft boat. That big grin you'll be wearing is just a sign that you're beginning to understand what Starcraftsmanship is all about.

You and your family buy a boat for one reason. To have a good time. The better the boat, the better the

time you have. And that's what Starcraftsmanship is all about. Starcraftsmanship is the sum total of everything we do here at Starcraft. It's a working philosophy. It's our way of approaching and carrying out research, design, human engineering, construction, everything. Right on through to sales and service. It's our way of bringing you more in terms of value, service and warranty. It's your guarantee of the good times. Year after beautiful year.

We've seen a lot of smiling faces since we started in 1923. And we wouldn't mind a bit adding yours in 1975.

Everybody here at Starcraft takes the business of

Starcraftsmanship and guaranteeing the good times, seriously. Before anything even comes close to becoming a Starcraft boat, we talk to people like yourself. We make it a point to find out what you're looking for, so when you're out looking for it, you find it. On a Starcraft.



MANSHIP 75



Molded-in ice wells? Yes. Built-in drink holders? Yes. Swing-up tables? Yes. Hidden convertible top storage? Yes. Rack and pinion steering? Yes. And much more.

New boat designs are refined to make sure you get the greatest comfort, convenience and beauty in the space available. Our efficiency and ingenuity in design is one of the reasons why we consistently introduce major industry innovations. Like the first one-piece aluminum bottom. And the first concave V-hull.

Our craftsmen complete each step of construction using the best materials and component parts available. Then in a series of inspections we check and double check to

make certain that you get every bit of value that you pay for.

And the value goes on. Our international network of dealers and distributors will help you select the one boat that's right for you and your family. And our Owner Protection Service (OPS) program assures you of expert service after the sale. Anywhere.

When you take the best ideas, the best designs, the best materials, the best people, and you put them all together, and you do that for over

50 years, you earn a reputation. That reputation goes on the line every time we sell another product. And we sell a lot of them. Besides being a leader in the boating industry, we sell more camping trailers than our next two competitors combined.

Add up all the reasons for our success, and you've got the best reason of all to buy Starcraft. Starcraftsmanship. It's a guarantee. A guarantee of the good times. We really believe that. And we think you will too.



Starcraftsmanship guarantees the good times.





STARCRAFT CRUISERS.

Rich. But not expensive.

While the price is often a drawback on other cruisers, on a Starcraft it's just another nice feature.

With a 15-year hull warranty on our 5052 marine aluminum hulls, luxurious appointments, excellent power-to-weight ratios and reasonable prices, we think you'll find our cruisers beyond compare.

Whether it's a day cruiser, cabin cruiser or rugged utility fishing cruiser, Starcraft has one that will fit your need. And your budget.



All Starcraft cruisers are trailerable.

**Starcraftsmanship
guarantees the
good times.**

Chieftain Mark IV 25 I.O.





Chieftain Express is a luxurious day cruiser open from cabin to aft deck. Room and comfort abound for you and your guests.

CHIEFTAIN EXPRESS 75

On board you'll find a 2½ cubic foot ice box, a convertible dinette, space for a porta-potti, interior lighting, and V-berths with cushions. The V-berths and convertible dinette combine to sleep 3 or 4 people. A new convertible stern lounge lets you sleep 2 more. A saddle-tan interior is upholstered in rich vinyl and complimentary tweed fabric. Color coordinated drapes and rich brown marine pile

carpeting add even more to the beauty and luxury.

Starcraftsmanship continues with new plush padded vinyl seats, padded side panels, carpeted ski rack liners, underseat storage and a lockable cabin door for privacy when you need it.

Other Express features include the precision of new rack and pinion steering, single lever controls, bilge pump and blower, safety glass windshield with electric wiper,



Chieftain Mark IV Express 22 I.O.—Color: Corsair White

Chieftain Mark IV Express 22 interior with new standard lockable bulkhead doors. (Shown in open position)



international running lights, bow, stern and side rails, cabin top rails, stern ladder, and tonneau cover for the cockpit. And there's an optional galley available.

ABS command instrumentation on Express includes speedo, tach, temp gauge, oil pressure light, fuel gauge, Star-Trim trim indicator and volt meter.

This year, Express comes in either a 25' or a new 22' length. Both are easily trailerable, and either will go a long way to guarantee the good times.

Starcraftsmanship guarantees the good times.



Chieftain Mark IV Express 25 interior shown with optional galley unit.



Chieftain Mark IV Express 25 I.O.—Color: Corsair White



† Convertible jump seat/lounge; standard on both Express models.

Chieftain Mark IV Express—Specifications

MODELS	Exp. 25 I.O.	Exp. 22 I.O.
Material.....	A	A
Hull Thickness.....	.100	.100
Center Length.....	25'2"	21'10½"
Beam.....	95½"	90¾"
Overall Height.....	91½"	84½"
Transom Width.....	90½"	84½"
Transom Height.....	46½"	43½"
Interior Side Depth.....	38¾"	40½"
†† Cabin Interior Height.....	51¾"	53½"
Rec. Cap., lbs.....	2500	2660
Rec. Cap., persons.....	13	10
Weight Systems Dry*.....	2458	1580
Rec. Max. H.P.....	240	165

Key: A—Aluminum

*All boat weights are calculated without engines or lower units. Contact your nearest Starcraft dealer for engine options and weights.

Chieftain Mark IV Express—Standard Equipment

Beverage Holders (2).....	Express 25	
V-Berth(s) with Cushions.....	Express 25 & 22	
Space for Porta-Potti.....	Express 25 & 22	
Ice Box (2.5 cu. ft.).....	Express 25 & 22	
Under Seat Storage.....	Express 25 & 22	
Convertible Dinette.....	Express 25 & 22	
Curtains.....	Express 25 & 22	
Window Screens.....	Express 25 & 22	
Interior Lights.....	Express 25 & 22	
Cabin Headliner.....	Express 25 & 22	
Full Interior/Side Panels.....	Express 25 & 22	
Marine Carpeting.....	Express 25 & 22	
Lockable Folding Cabin Door.....	Express 25 & 22	
Bow Hatch.....	Express 25 & 22	
Helm Seat (single).....	Express 25 & 22	
† Convertible Jump Seat/Lounge.....	Express 25 & 22	
Padded Gunwales.....	Express 25 & 22	
Padded Motor Cover.....	Express 25 & 22	
ABS Command Instrumentation.....	Express 25 & 22	
Rack & Pinion Mech. Steering.....	Express 25 & 22	
Single Lever Power Control.....	Express 25 & 22	
Fuel Capacity (36 gal.).....	Express 25 & 22	
Elec. Fuel Tank Switchover.....	Express 25 & 22	
Bilge Pump.....	Express 25 & 22	
Bilge Blower.....	Express 25 & 22	
Safety Glass Windshield.....	Express 25 & 22	
Electric Windshield Wiper.....	Express 25 & 22	
International Running Lights.....	Express 25 & 22	
Bow Rails.....	Express 25 & 22	
Cabin Top Rails.....	Express 25 & 22	
Side Rails.....	Express 25 & 22	
Stern Rails W/Ladder.....	Express 25 & 22	
Step Pads.....	Express 25 & 22	
Tie-Up Cleats.....	Express 25 & 22	
Bow/Stern Eyes.....	Express 25 & 22	
Cockpit Tonneau.....	Express 25 & 22	
Porta-Potti.....	Opt. Express 25 & 22	
Galley Unit Stove/Sink.....	Opt. Express 25	
Full Camper Canvas (replaces Tonneau).....	Opt. Express 25 & 22	

† Convertible jump-seat lounge is standard with 4 & 6-cylinder engines. Padded motor box standard with 8-cylinder engines, optional full sundeck/motor cover available.

††Hardtop Height 73"



Chieftain is a luxurious fully-enclosed cabin cruiser with sleeping room for a family of four. Chieftain 25 and 22 have a galley and an enclosed space for a marine head.

CHIEFTAIN 75

The galley includes a sink with 10-gallon water tank, 2½ cubic foot ice box, convertible dinette and decorator storage cabinets, beautifully finished for food and supplies. In the 25, there's also a two-burner stainless steel alcohol stove.

Chieftain 25 and 22 have a sierra brown vinyl and complimentary tweed interior. Color coordinated drapes and rich brown marine pile carpeting add even more to their beauty and luxury. Chieftain 18 is appointed with a polar blue vinyl interior.

Depending on the model you

choose, you'll get standard features like the precision of rack and pinion steering. Padded motor cover. Single lever controls. Bilge pump and blower. Safety glass windshield. Bow hatch. International running lights, bow, side and stern rails, cabin top rails, aft sun lounge, stern ladder, new plush padded wet-look vinyl seats and side panels, and convenient interior lighting. There's a tonneau cover for the cockpit, too.

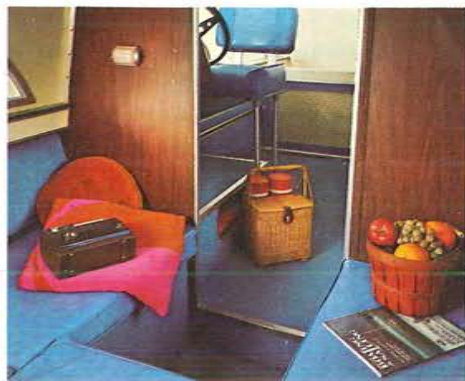


Chieftain Mark IV 25 helmsman station with new molded ABS command instrumentation.

ABS command instrumentation includes speedo, tach, temp gauge, oil pressure light, fuel gauge, Star-Trim



Chieftain 18 O.B.—Color: Corsair White (interior below)



trim indicator and volt meter.

Chieftain. Never before could so many afford so much.

**Starcraftsmanship
guarantees the good times.**



Chieftain Mark IV 22 I.O. (also O.B.)—Color: Corsair White (interior below)



Chieftain Mark IV 25 I.O.—Color: Corsair White (interior below)



Chieftain—Specifications

Chieftain—Standard Equipment

MODELS	Mk. IV 25 I.O.	Mk. IV 22 I.O.	Chief 22 O.B.	Chief 18 O.B.		
Material.....	A	A	A	A	Beverage Holders (2).....	Chieftain 22 I.O.
Hull Thickness.....	.100	.100	.100	.100	V-Berth(s) with Cushions.....	all
Center Length.....	25 ¹ / ₂ '	22 ¹ / ₂ '	21'7"	18'6"	Space for Porta-Potti.....	all
Beam.....	96"	90 ³ / ₄ "	90 ³ / ₄ "	82 ¹ / ₂ "	Sink with 10 gal. Tank.....	Chieftain 22
Overall Height.....	96 ¹ / ₂ "	83"	83"	75 ¹ / ₂ "	Galley Unit (Stove & Sink).....	Chieftain 25
Transom Width.....	90 ¹ / ₂ "	84 ¹ / ₂ "	84 ¹ / ₂ "	78 ¹ / ₂ "	Ice Box (2.5 cu. ft.).....	Chieftain 25 & 22
Transom Height.....	46 ¹ / ₂ "	43"	43"	21 ¹ / ₂ "	Storage Cabinets.....	Chieftain 25 & 22
Interior Side Depth.....	31 ³ / ₈ "	33 ¹ / ₄ "	33 ¹ / ₄ "	28"	Convertible Dinette.....	Chieftain 25
Cabin Interior Height.....	68 ¹ / ₂ "	57 ¹ / ₂ "	57 ¹ / ₂ "	8	Window Screens.....	Chieftain 25 & 22
Rec. Cap., lbs.....	2500	2000	2200	1900	Curtains.....	Chieftain 25 & 22
Rec. Cap., persons.....	10	10	9	8	Interior Lights.....	all
Weight Systems Dry*.....	2570	1650	1410	1030	Cabin Headliner.....	Chieftain 25 & 22 I.O.
Rec. Max. H.P.....	240	165	170	150	Full Interior/Side Panels.....	all
					Marine Carpeting.....	Chieftain 25 & 22 I.O.
					Vinyl Floor Covering.....	Chieftain 18 & 22 O.B.
					Locking Cabin Door.....	all
					Bow Hatch.....	all
					Helm Seat.....	all
					Companion Seat.....	all
					Aft Jump Seats.....	Chieftain 22 I.O.
					Aft Lounge.....	Opt. Chieftain 22 O.B. & 25
						(Std. w/Twins)
					Padded Gunwales.....	Chieftain 25 & 22 I.O.
					Side Panel Storage.....	Chieftain 22 & 18
					Padded Motor Cover.....	Chieftain 25 & 22 I.O.
					ABS Command	
					Instrumentation.....	Chieftain 25 & 22 I.O.
					Control Panel.....	Chieftain 22 O.B. & 18
					Rack & Pinion Mech. Steering.....	all—Chieftain
						18 & 22 O.B. w/thru pin motor hook-up
					Single Lever Pwr 'trol.....	Chieftain 25 & 22 I.O.
					Fuel Capacity.....	(36 gals.) 25 & 22, (18 gal.) 18 & 22 O.B.
					Elec. Fuel Tank Switchover.....	25 & 22 I.O.
					Bilge Pump.....	all
					Bilge Blower.....	Chieftain 25 & 22 I.O.
					Safety Glass Windshield.....	all
					Entertainment Table.....	Chieftain 22 I.O.
					International Running Lights.....	all
					Bow Rails.....	all
					Cabin Top Rails.....	Chieftain 25 & 22
					Side Rails.....	all
					Stern Rails W/Ladder.....	Chieftain 25 & 22 I.O.
					Step Pads.....	all
					Tie-Up Cleats.....	all
					Bow/Stern Eyes.....	all
					Cockpit Tonneau.....	Chieftain 25 & 22
					Porta-Potti.....	Opt. all
					Full Camper Canvas (replaces Tonneau).....	Opt. Chieftain 25, 22 & 18

Key: A—Aluminum *All boat weights are calculated without engines or lower units. Contact your nearest Starcraft dealer for engine options and weights.



CAPRI SPORT 20 ISLANDER 22

Capri Sport 20 is a perfect combination of cruiser luxury and runabout versatility. Capri's tri-hull fiberglass construction, luxurious interior and bow riding compartment make it the choice of many families. And entertaining on Capri Sport is pure fun.

The cuddy cabin is luxuriously appointed



Capri Sport Cruiser 20 I.O.—Color: Seacrest White. Shown with opt. galley unit.



Islander 22 I.O.—Color: Polar Blue

with saddle tan and tweed upholstery; carpeted headliner and convertible dinette.

In the cockpit you'll find sleeper seats, sun top, full command instrumentation, rack and pinion steering, ice box, fold-down stern ladder and lockable cabin. Optional galley is available.

Islander 22 is made to order for cuddy cabin enthusiasts who want a go-anywhere do-anything cruiser.

It offers rugged aluminum V-hull construction and no-nonsense performance.

Islander includes a roomy cuddy cabin with locking cabin door, parchment wet-look interior and parchment seats, space for a porta-potti, command instrumentation and rack and pinion steering.





Islander 22



Islander Mark IV 22



Islander Mark IV 22 I.O.—Color: Leaf Gold

Islander 22 Mark IV the luxury Islander, has a leaf gold cockpit interior and tweed cabin upholstery. It also has draperies, padded side panels, sleeper seats, cockpit tonneau cover, swing-up table and more.

Capri Sport. And Islander. Two great ways to have a good time. We guarantee it.

Starcraftsmanship guarantees the good times.

Capri Sport/Islander—Specifications

Capri Sport/Islander—Standard Equipment

MODELS	Isl. Mk. IV 22 I.O.	Isl. 22 I.O.	Capri Sport 20 I.O.
Material.....	A	A	F
Hull Thickness.....	.100	.100	¼"-¾"
Center Length.....	22'½"	21'5½"	20'7½"
Beam.....	92"	90½"	96"
Overall Height.....	57"	72½"	77½"
Transom Width.....	84"	84"	91½"
Transom Height.....	40"	40"	47¾"
Interior Side Depth.....	33½"	33½"	34¾"
Cabin Interior Height.....	47½"	47½"	50"
Rec. Cap., lbs.....	2000	2000	2200
Rec. Cap., persons.....	10	10	10
Weight Systems Dry*.....	1468	1377	2150
Rec. Max. H.P.....	165	165	225

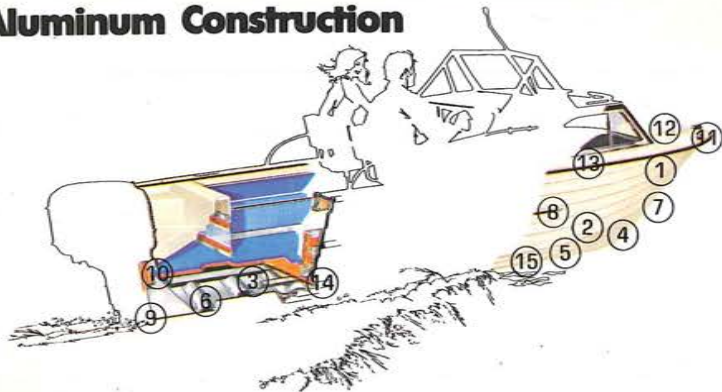
Beverage Holders.....	Capri Sport (4), Islander Mark IV (2)
Lockable Under Floor Ski Storage.....	Capri Sport
V-Berth(s) with Cushions.....	Islanders
Space for Porta-Potti.....	all
Ice Box (1.5 cu. ft.).....	Capri Sport
Storage Cabinets.....	Capri Sport
Convertible Dinette.....	Capri Sport
Curtains.....	Capri Sport, Islander Mark IV
Interior Lights.....	all
Cabin Headliner.....	Capri Sport, Islander Mark IV
Full Interior/Side Panels.....	Capri Sport
Full Interior Side Panels w/ski rack.....	Islanders
Marine Carpeting.....	Capri Sport
Vinyl Floor Covering.....	Islander Mark IV
Locking Cabin Door.....	Islander 22
Bow Hatch.....	all
Helm Seat.....	Islander 22
Companion Seat.....	Islander 22
Sleeper Seats.....	Capri Sport, Islander Mark IV
Bow Seats.....	Capri Sport
Aft Lounge.....	Capri Sport
Side Panel Storage.....	all
Padded Motor Cover.....	Islanders
ABS Command Instrumentation.....	all
Rack & Pinion Mech. Steering.....	all
Single Lever Power Control.....	all
Fuel Capacity (36 gal.).....	all
Electric Fuel Tank Switch-over.....	all
Bilge Pump.....	all
Bilge Blower.....	all
Safety Glass Windshield.....	all
Entertainment Table(s).....	Capri Sport (2)
Hidden Top Storage.....	Capri Sport
Sun Top.....	Capri Sport
International Running Lights.....	all
Bow Rails.....	Capri Sport, Islander Mark IV
Cabin Top Rails.....	Islanders
Side Rails.....	Capri Sport
Stern Rails w/Ladder.....	Capri Sport,* Islander Mark IV
Step Pads.....	all
Tie-Up Cleats.....	all
Bow/Stern Eyes.....	all
Cockpit Tonneau.....	Islander Mark IV
Porta-Potti.....	opt. all
Galley Unit (Sink & Stove).....	Opt. Capri Sport
Full Camper Canvas.....	opt. all
Lockable Underfloor Ski Storage.....	Capri Sport

Key: F—Fiberglass A—Aluminum

*All boat weights are calculated without engines or lower units. Contact your nearest Starcraft dealer for engine options and weights.

*Folding Ladder

Aluminum Construction



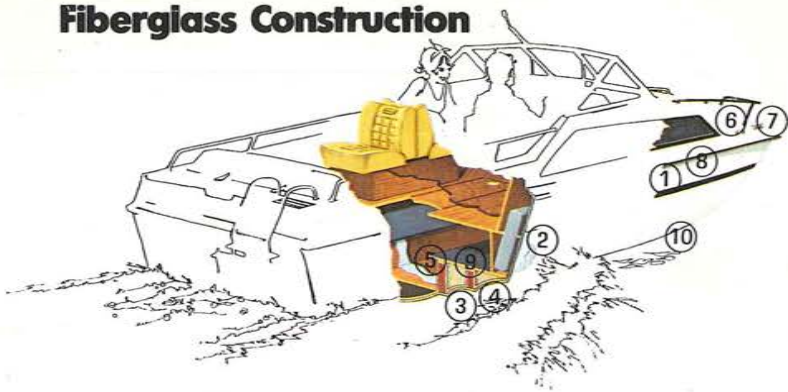
1. Hulls and decks are made of 5052 marine aluminum.
2. Lapstraking is rolled into the hull sides. Adds strength without adding weight.
3. One piece aluminum bottom eliminates a center keel seam.
4. Seams at the chine are taped, sealed and double riveted.
5. Spray rails are rolled into the chine.
6. Solid aluminum rivets bond the hull to exterior keel and interior ribs.
7. Vinyl base enamel is applied to aluminum after a special acid etch primer.
8. Exterior hull bumper rails are joined with side storage racks for additional side support.
9. Aluminum transom is reinforced with plywood, and a knee support (outboards) is riveted to the keel for maximum strength.
10. Plywood motor mount (outboards) reduces noise and vibration.
11. Deck framing is bolted and reinforced with aluminum angles.
12. Foam padding under decks reduces noise and vibration.
13. Anodized aluminum extrusions with vinyl bumpers are added to gunwales for strength and protection.
14. Positive flotation material meets and exceeds BIA standards.
15. Wide angle concave V-hull gives lift and stability.

All product illustrations and specifications are based on information available at the time of publication. Some of the equipment shown separately and on product illustrations is optional at extra cost. Because of a continuing policy of product improvement and a desire to provide better consumer value, Starcraft reserves the right to make changes without notice or obligation. Your local Starcraft dealer will have exact specifications and product offerings at the time you buy.



YOUR STARCRAFT DEALER

Fiberglass Construction



1. Fiberglass gelcote is sprayed into mold to an exacting .018" for uniform color depth.
2. Layers of chopped fiberglass and woven roving are applied to build a thickness of at least 1/4".
3. High stress areas get an extra layer of woven roving for even greater strength.
4. Fiberglass bonded wood stringers and cross braces add even more support.
5. Plywood floor is fiberglassed in place to complete truss type hull support.
6. Wood supports are fiberglassed at all points of deck stress. Step anywhere.
7. Deck hardware is bolted through to wood mounting blocks, which are fiberglassed to under side of deck.
8. Anodized aluminum extrusions with vinyl bumpers on gunwales.
9. Positive flotation material meets and exceeds BIA standards.
10. Tri-hull has a deep center keel forward to cut through the water. Side keels lend stability at slow speeds and spray control when planing. Aft, the hull flattens into a concave V design making the hull plane quickly and providing a stable platform for extra load carrying capacity.

Our boats are trouble-free. So is our warranty.

If you ever do have a problem with your Starcraft boat, our dealers will take care of it immediately. You see, our boats are made with Starcraftsmanship. And we're so sure of their quality that we back each one with a full 24 month warranty against defects in materials and workmanship. Further, our aluminum hulls are warranted for 15 years. (Ask your dealer for the complete Starcraft warranty.)

Starcraft also offers a complete line of runabouts and fishing boats. For information concerning these models, ask your dealer for our '75 runabout and fishing boat catalogs.

